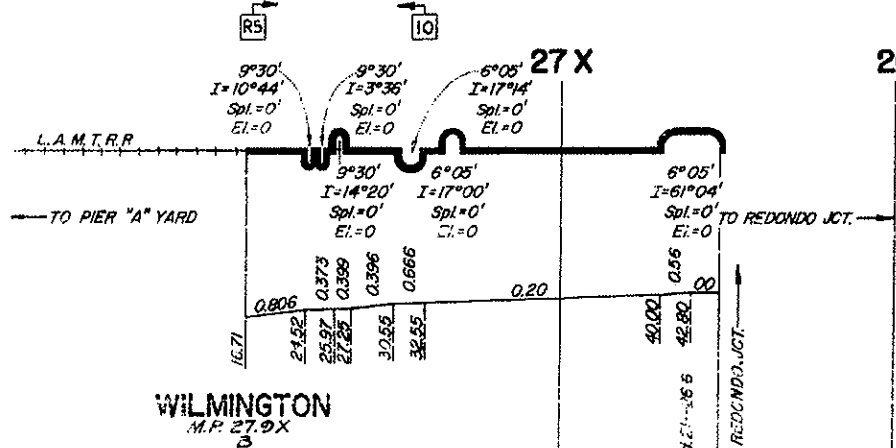


*Intentionally Blank*



**NOTE:**

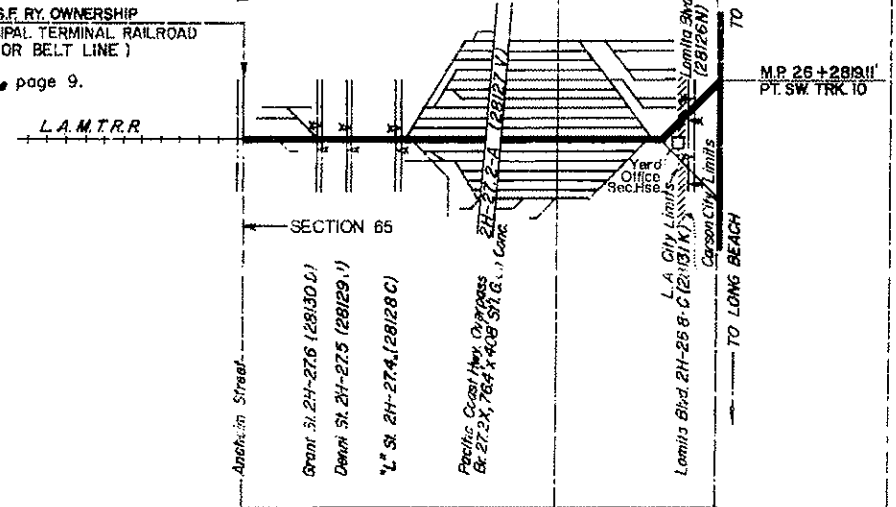
ALL TRACKS SOUTH OF ANAHEIM STREET  
ARE OPERATED BY THE HARBOR BELT LINE.



**WILMINGTON**  
M.P. 27.9X

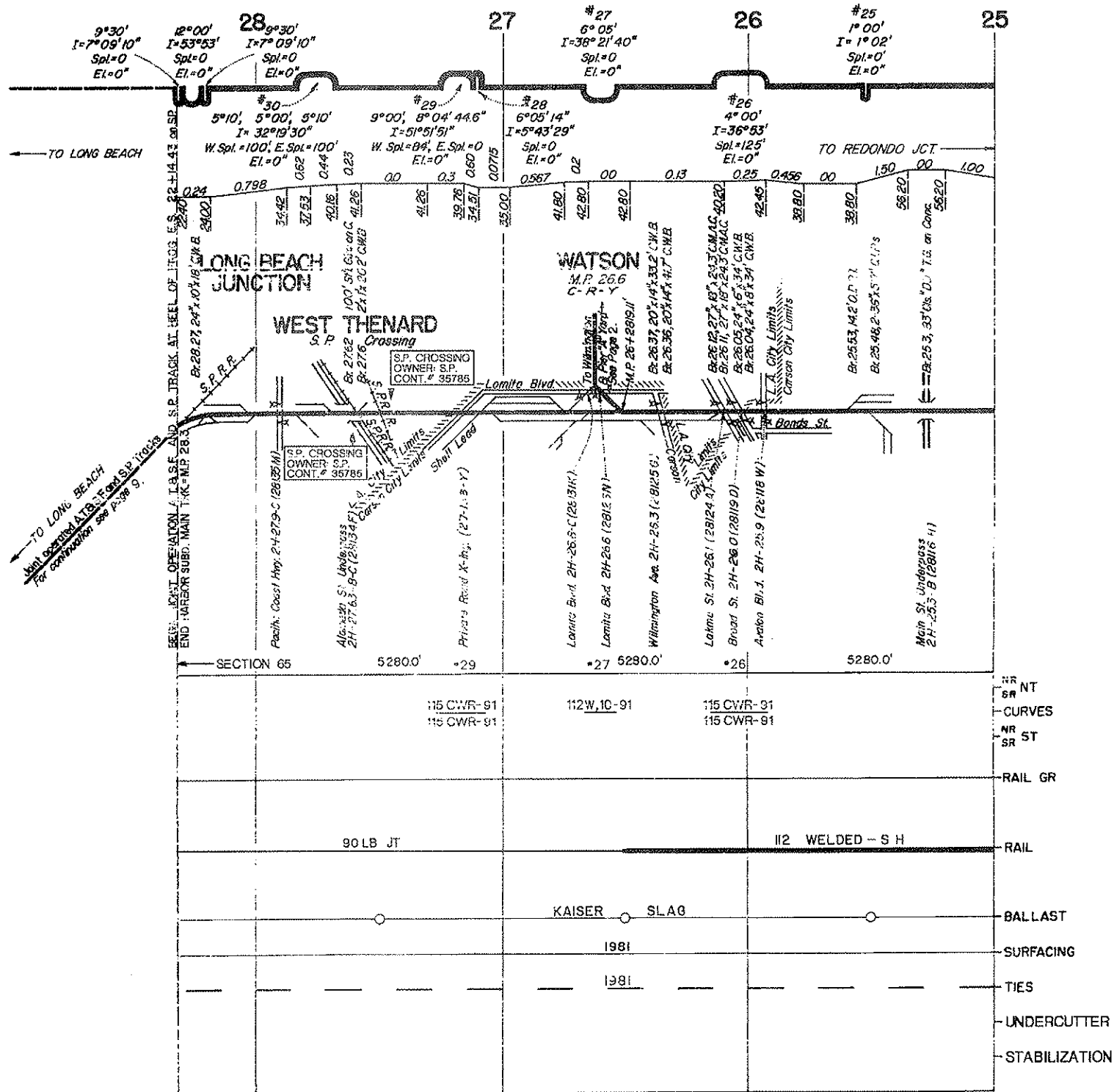
M.P. 27+4976.51' END AT B.S.F. RY. OWNERSHIP  
 = BEGIN LOS ANGELES MUNICIPAL TERMINAL RAILROAD  
 ( OPERATED BY THE HARBOR BELT LINE )

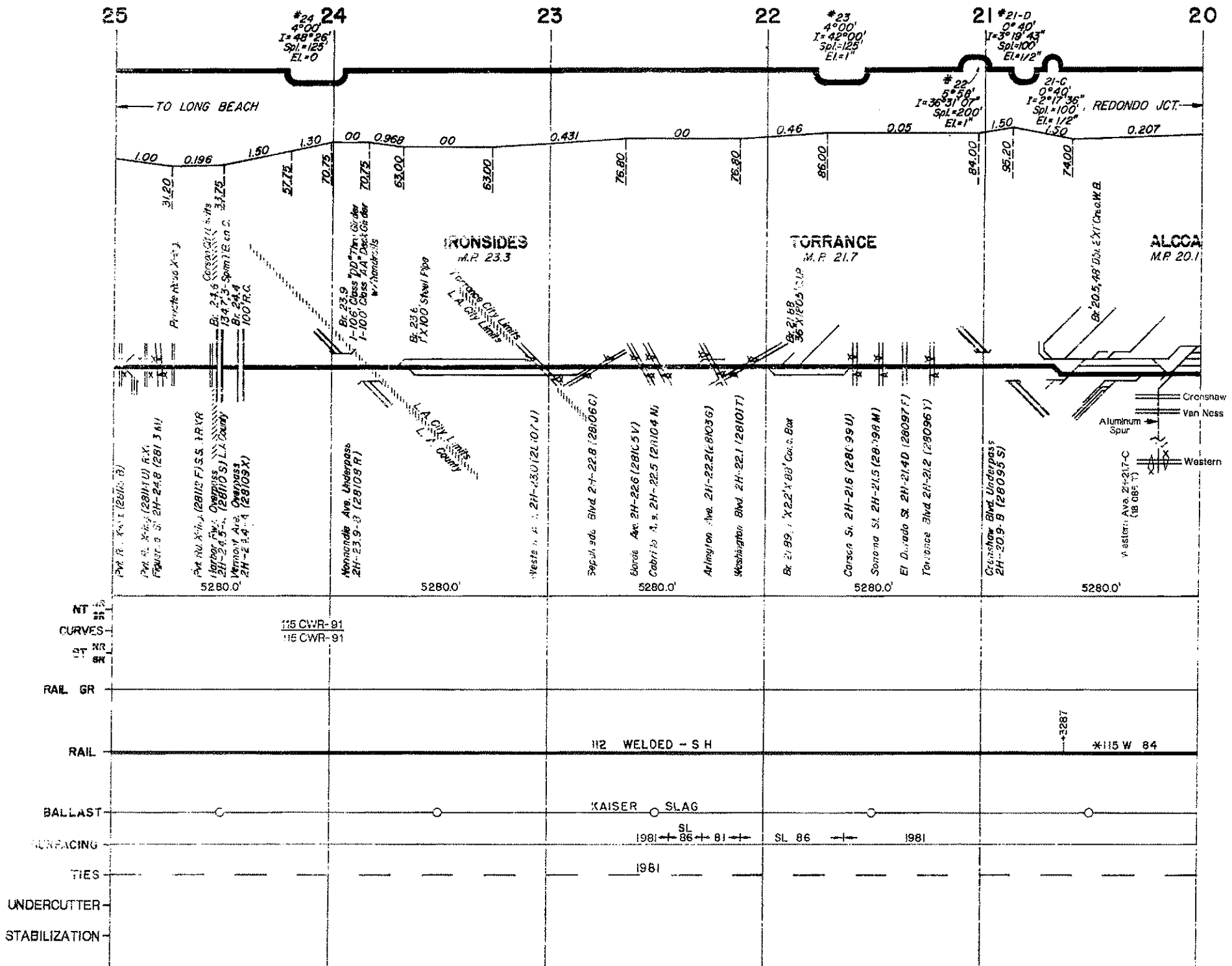
For continuation see page 9.



- MT RR
- CURVES
- ST RR
- RAIL GR.
- RAIL
- BALLAST
- SURFACING
- TIES
- UNDERCUTTER
- STABILIZATION

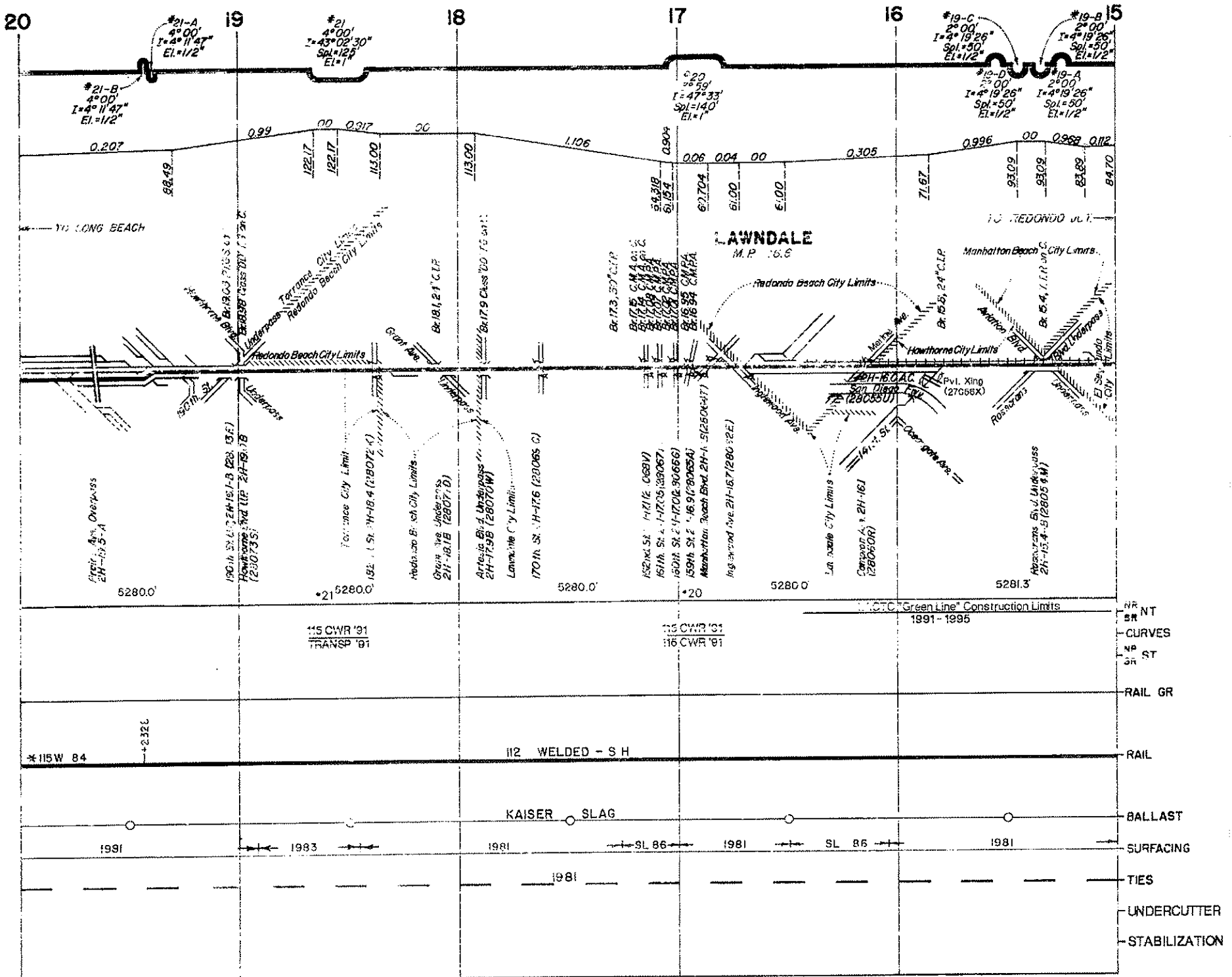
	112-15 CWRI	112-15 CWRI
	112 WELDED - S H	
	KAISER	SLAG
	1981	
	1981	



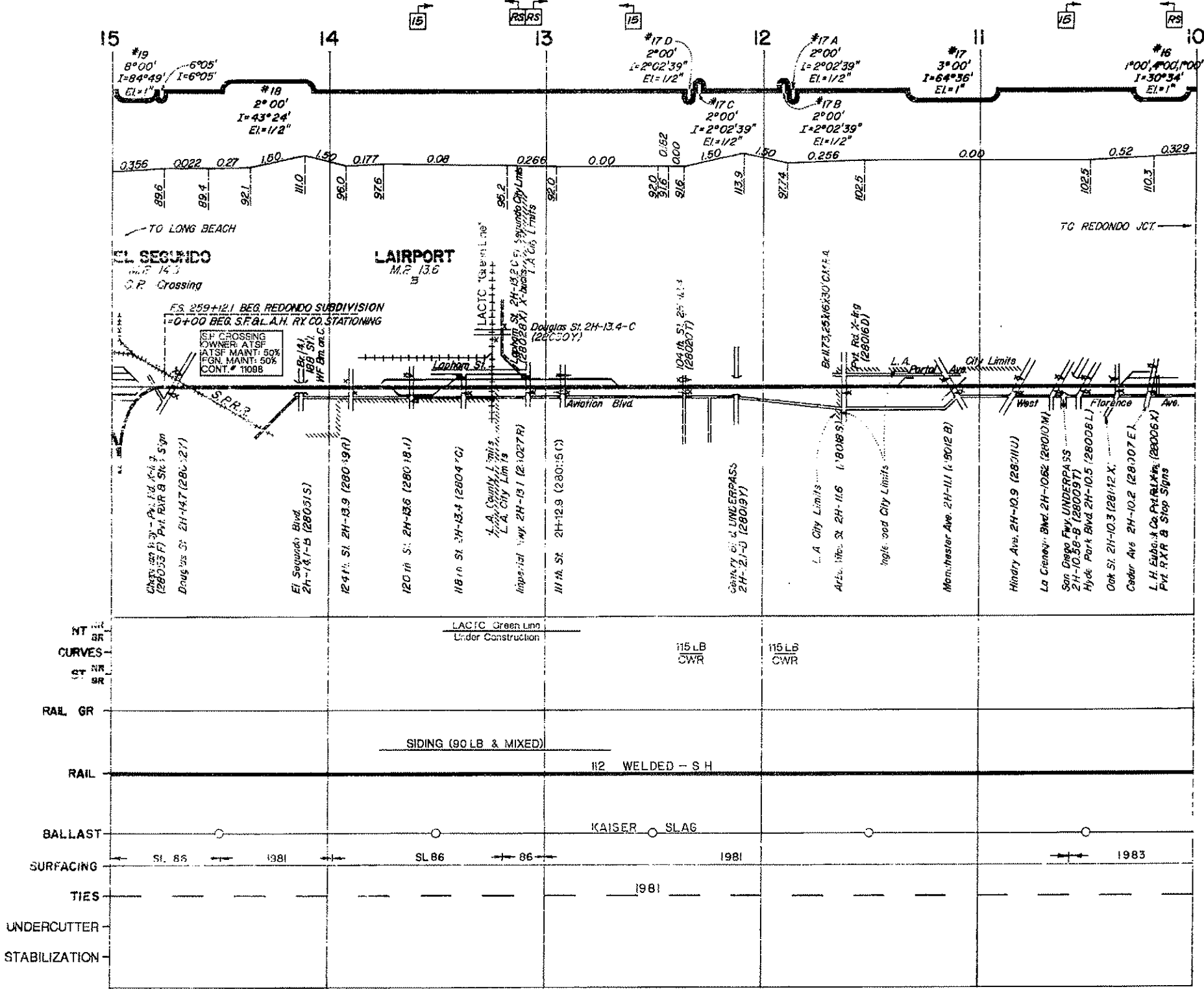


REVISED FEB. 1992

HARBOR SUBDIVISION

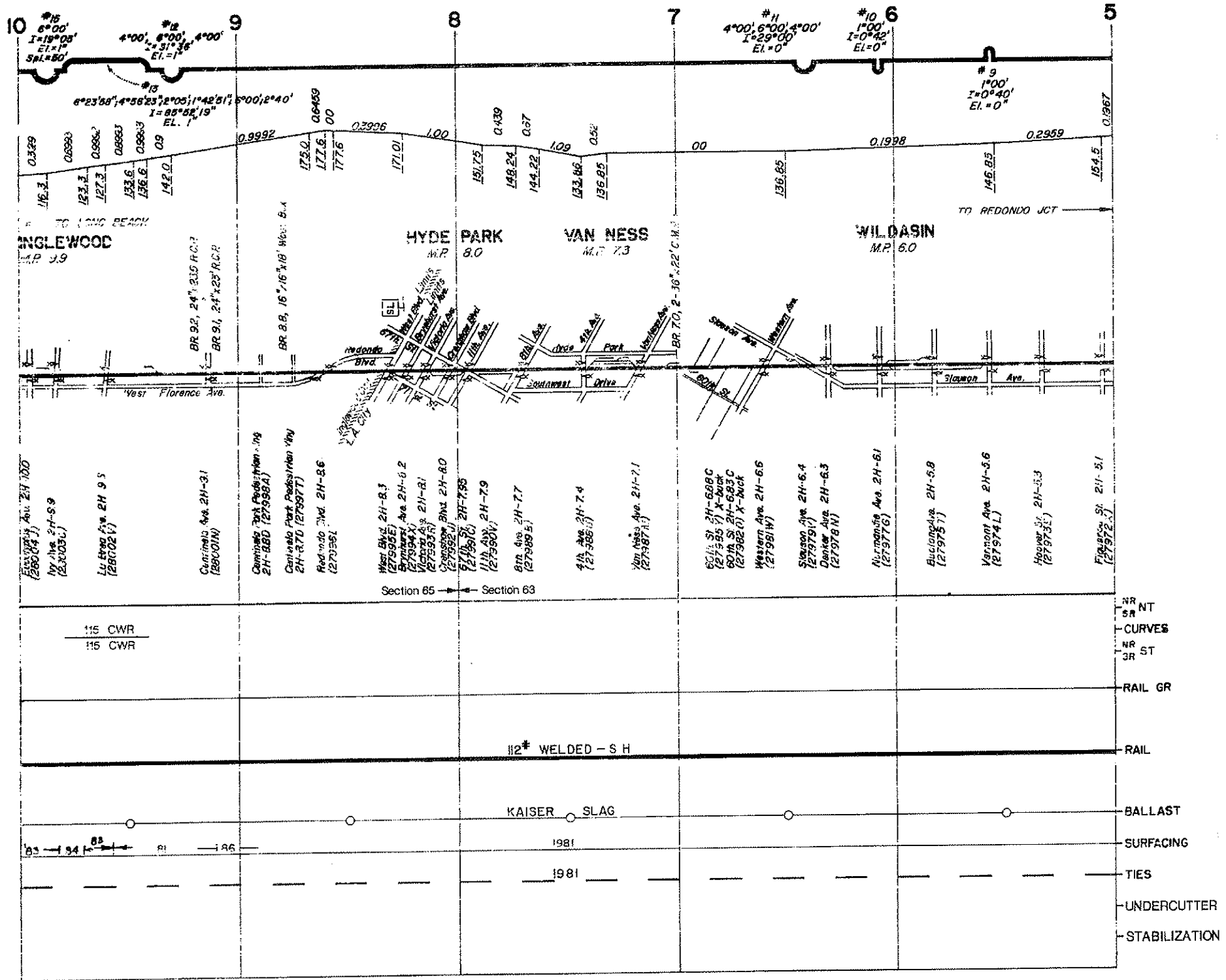


- NR
- SR NT
- CURVES
- NR
- SR ST
- RAIL GR
- RAIL
- BALLAST
- SURFACING
- TIES
- UNDERCUTTER
- STABILIZATION

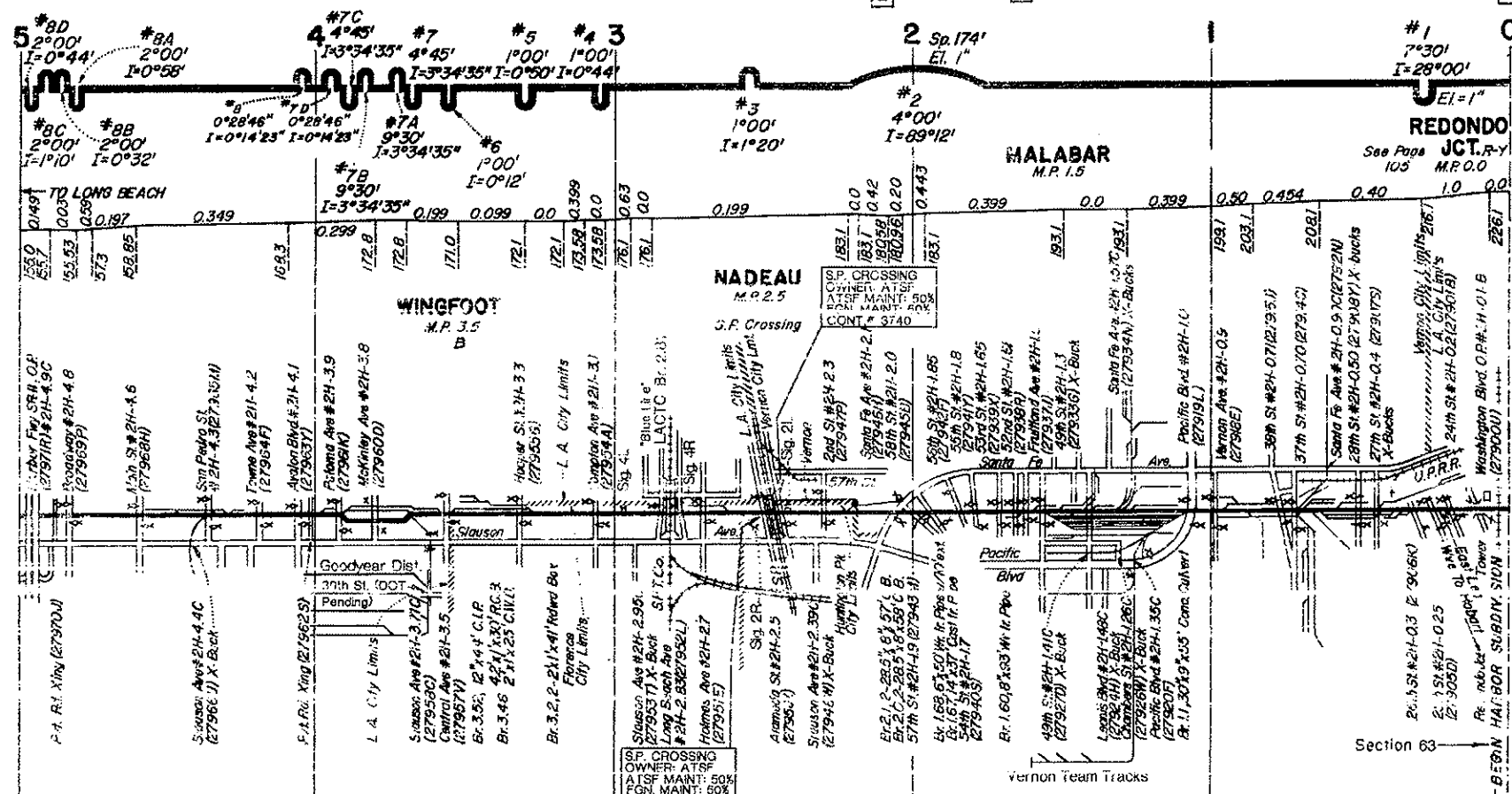
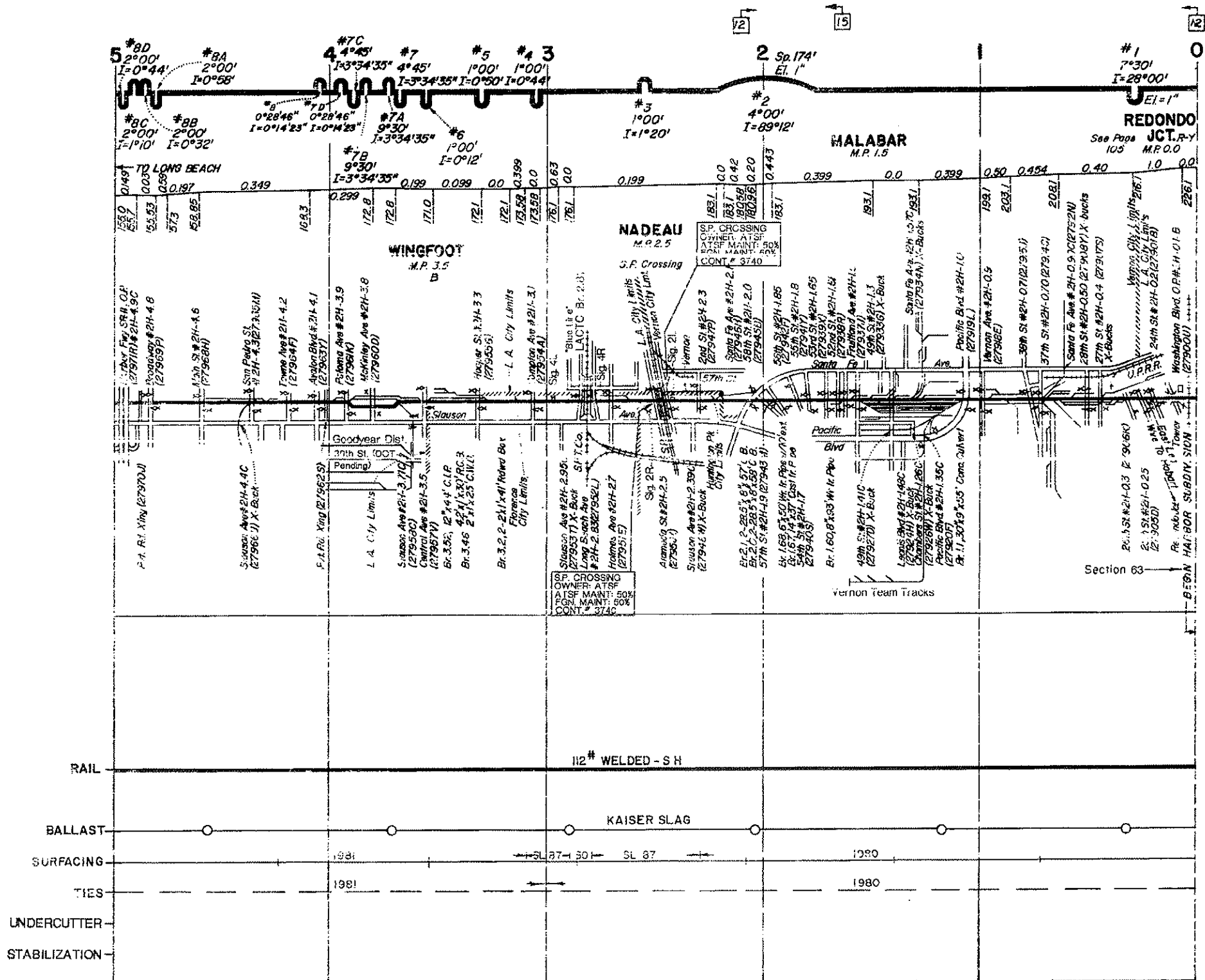


REVISED FEB. 1992

HARBOR SUBDIVISION







REVISED FEB. 1992

HARBOR SUBDIVISION

# Harbor Subdivision

Redondo Jct. (M.P. 0.0) to Long Beach (M.P. 28.3)  
and Watson (M.P. 26.6) to Wilmington (M.P. 27.9X)